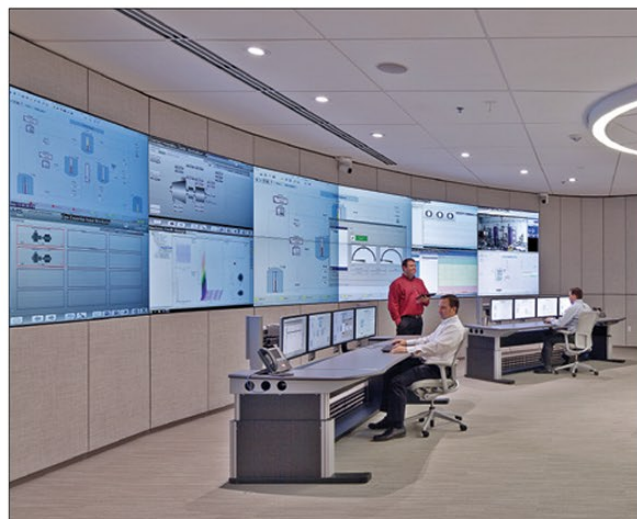


EMERSON PROCESS MANAGEMENT

EXCHANGING IDEAS, CREATING SOLUTIONS



6005 Rogerdale Road
Houston, Texas 77072
(281) 879-2499
www.EmersonProcess.com

Emerson Process Management, a business of Emerson (NYSE: EMR), is a leader in helping businesses automate their production, processes and distribution capabilities to improve plant reliability, extend the life of costly assets, improve safety compliance, lower costs, and increase overall productivity. With \$9.2 billion in global sales in fiscal 2014, it is a global leader in process automation.

Automating production and processing in the chemical, oil and gas, refining, pulp and paper, power, water and wastewater treatment, mining and metals, food and beverage, life sciences and other industries, the company combines superior products and technology with industry-specific engineering, consulting, project management and maintenance services. Its brands include Fisher®, Micro Motion®, Rosemount®, Bettis™, Daniel™, Roxar™, Delta V™ and Ovation.

Unmatched in its technologies, Emerson's success is enhanced by the experience of its people. The company invests in project engineers, application engineers,

sales and marketing personnel, and field service technicians to understand and get closer to customers and support customer growth in a responsive manner. Emerson Process Management has approximately 2,500 employees in Texas, of which nearly 1,000 are in Houston. Combined with our Local Business Partners, Emerson has more than 1,300 people in the greater Houston area.

Yet Emerson's focus is more than just business. Emerson's employees and business units give back to the community through participation in activities that enrich lives and enhance the community experience. Participation has included support of Greater Houston Partnership, Tour de Cure, Junior Achievement, United Way, Girl Scouts, Big Brothers and Sisters, Houston Hospice, Habitat for Humanity and Star of Hope to name a few. ■

Emerson Process Management
www.emersonprocess.com